



BarlowTyrie

Est 1920

Care of Slings and Woodland Screen Curtains

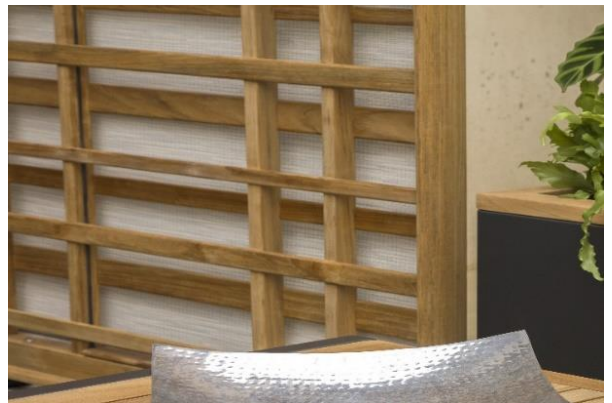
We use the following three materials for the seats and backs on our Sling furniture plus the optional curtain on our Woodland Screen. We show colour options in our catalogue and on our website

Textilene® Fabric

Colours Charcoal .500, Titanium .502, Platinum .504, Pearl .505 are available on collections Atom, Aura, Cocoon, Equinox (non-powder coated), Horizon, Mercury (non-powder coated), Monterey and Woodland.

Martinique .509 is available on Woodland Screen Curtain only and Denim .514 is available on Atom collection only.

Woodland Screen (3WS23), Woodland Screen Curtain in Martinique (3WSC23.509), Aura Planter 50 with Graphite frame and teak trim.



Focusing on subtle patterns that read as textures, Textilene® achieves an elevated indoor aesthetic in your outdoor setting and guarantees that our slings are strong, durable, mildew resistant, and require the minimum of maintenance. After rain, a light tap and any water simply drops off.



Horizon Armchair with Textilene® Slings in Titanium (1HOAS.502) and Drummond Table 185 (2DR18)



BarlowTyrie

Est 1920

Sunbrella® Woven Fabric

Colours Carbon .513 and Seagull .512 are available on collections Equinox powder coated, Mercury powder coated and Woodland Screen Curtain (Carbon only).

We use this fabric for extra luxury, blending the strength of PVC with the softness of Sunbrella® acrylic yarn for added comfort.

Equinox Carver shown with powder coated stainless steel frame in Graphite and Carbon Sunbrella® woven fabric sling (1EQPA.01.513) and powder coated Arctic White frame with Seagull Sunbrella® woven fabric sling (1EQPA.02.512)



Equinox Lounger with powder coated stainless steel frame in Arctic White with Seagull Sunbrella® woven fabric sling (1EQPL.02.512).



BarlowTyrie

Est 1920

Jacquatex® Fabric

Colour Ivory .601 is only used for the Woodland Screen Curtain.
This fabric is made from polyester yarn which is hard wearing and durable.

Care and Maintenance

All these materials are suitable for outdoor use and require minimal maintenance.

We can supply replacement slings for current and some discontinued products; please contact our customer service department with the model of your furniture to enquire.

Care Products

Special care products are available to maintain the beauty of your Barlow Tyrie furniture. We recommend you use the following care product for Sling furniture.



Woven & Sling Non Foam Cleaner

Product code: 4WTC

Woven & Sling Non-Foam Cleaner is a non-foam agent that maintains woven furniture, Textilene® slings and Sunbrella® fabrics without unsightly residue. Supplied with its own special applicator pad.

Quantity: 1 litre / 33 fl oz

Available from your Barlow Tyrie Stockist.

Repair & Maintenance Queries

UK and Europe – Please contact customer service via uksales@teak.com

USA – Please contact customer service via usasales@teak.com

Before carrying out any repair to your Barlow Tyrie furniture, please read our terms, conditions and warranty.



BarlowTyrie

Est 1920

Your Barlow Tyrie Stockist

You can search for your Barlow Tyrie Stockist using this link [nearest stockist](#).